

Local Manageable 16E1 Fiber Multiplexer



Model:AZ-OP-16E1-4ETH/M

Functions:

AZ-OP-16E1-4ETH/M is part of Multi E1 and Fast Ethernet transmission system family, used to build a 150Mb/s optical point-to-point link. Based on an ASIC chip; it performs the transportation of 16 E1 and a fast Ethernet at full speed. It also provides an order-wire and an auxiliary UART interface for Management. The optical fiber multiplexer offers a highly integrated solution for the perfect function, stable performance and convenience with low power consumption. The fiber multiplexer's work status can be monitored and configured by management easily.

PRODUCT CHARACTERISTIC:

Merges the Ethernet and time-division multiplex (TDM) transmission to the same pipe.

Provides 16 E1 over fiber transmission.

Provides 4 100Mb/s Fast Ethernet interface(optional).

The standard E1 interfaces comply with ITU-T G.703, G.823 and G.742.

Supports either auto-negotiation or hardware configuration selection of the Ethernet operation.

The Ethernet interface supports VLAN and Flow Control function(set by RS232 NMS).

Real-time Monitoring and all necessary alarm display for easy management.

Supports Local and Remote Loop-back Test.

Uses standard telephone set as order-wire(optional).

Provides one transparent RS232 interface for user's data links(optional).

Provides local Network Management(optional).

Extends the fiber link up to 120 km without any repeater.

Compact single board Terminal.

Interface:

E1 interface:

Interface code: HDB3 code
Line speed: 2.048Mbp/s ± 50 ppm
Interface standard: ITU-T G 703
Interface impedance:
75 Ω /unbalanced (BNC) or 120 Ω /balanced (RJ45)
Allowed attenuation: 0~6dBm

Ethernet 10/100Base-T Port:

Rate: 10/100M, full/duplex auto-negotiation
Protocol: Support IEEE 802.3
AC Address Entries: 4096 Entries
Connector: RJ45

Power supply:

working voltage range wide, good
anti-disturb and Isolation, work stable
option I – DC-48V, range DC-36V~DC-72C
option II – AC220V, range AC165V~AC240V

Power Consumption: ≤ 5 Watts

Fiber interface:

Optical wavelength:
1310nm or 1550nm for single-mode fiber
850nm/1310nm for multi-mode fiber
Transmission distance:
Multi Mode fiber: 2Km
Single mode fiber: 20Km/40Km/60 Km/120Km
Optical interface: SC or FC or ST

RS232/Console port:

Rate : 9600Kbps (Asynchronous)
Interface characteristic : satisfies ITU-T V.
Connector : RJ45

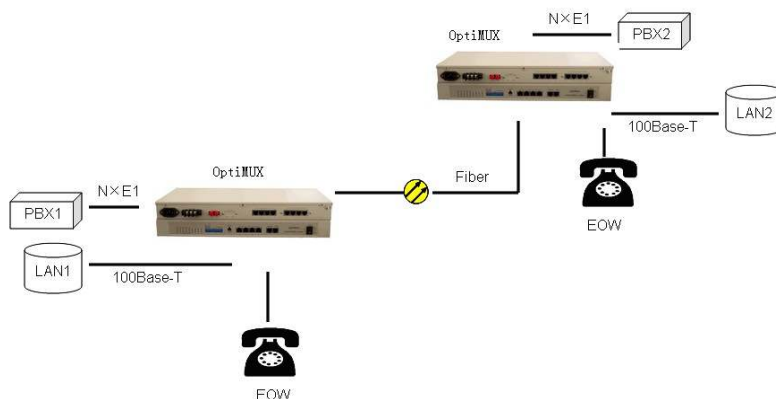
Dimension:

433mm(L)
138mm(W)
44mm(H)

environment condition:

Operating temperature: 0C~+50 C
Storage temperature: -20 C~+70 C
Relative temperature:95% (uncondensed)

APPLICATION:



Order information:

AZ-OP-16E1/M	16E1 over fiber multiplexer, E1 port 75ohm(BNC) or 120ohm(RJ45), single mode, dual fiber, 20Km, power AC 220V or DC48V, GUI management
AZ-OP-16E1-M/AD	16E1 over fiber multiplexer, E1 port 75ohm(BNC) or 120ohm(rj45), single mode, dual fiber, 20Km, double power AC220V and DC48V, GUI management
AZ-OP-16E1-4ETH/M/AC	16E1 over fiber multiplexer, E1 port 75ohm(BNC) or 120ohm(RJ45), 4*10/100M Ethernet, single mode, dual fiber, 20Km, power AC 220V, GUI management
AZ-OP-16E1-4ETH/M/AD	16E1 over fiber multiplexer, E1 port 75ohm(BNC) or 120ohm(rj45), 4*10/100M Ethernet, single mode, dual fiber, 20Km, double power AC220V and DC48V, GUI management